



Allotment of Land for Development of Industry at Dhakeswari Cotton Mill Premise, Asansol



West Bengal Industrial Development Corporation (WBIDC), is offering land on 'as is where is basis' for setting up of Industries at Dhakeswari Cotton Mill Premise, Asansol, Paschim Bardhaman over 193.29 Acres of land.

Plot Size: 193.29 Acres

Average Price: ~ INR 48 Lakh/Acres



Damodar Railway Station ~2 km



Located in Industrial area



Asansol ~10 Km



Access to Truck infrastructure

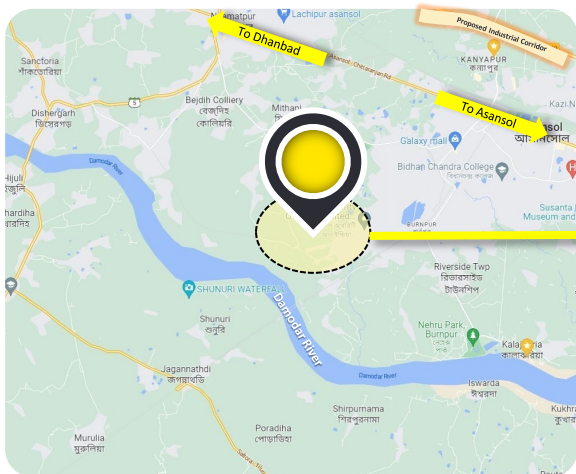


Andal Airport 50 km



Uninterrupted Power Supply

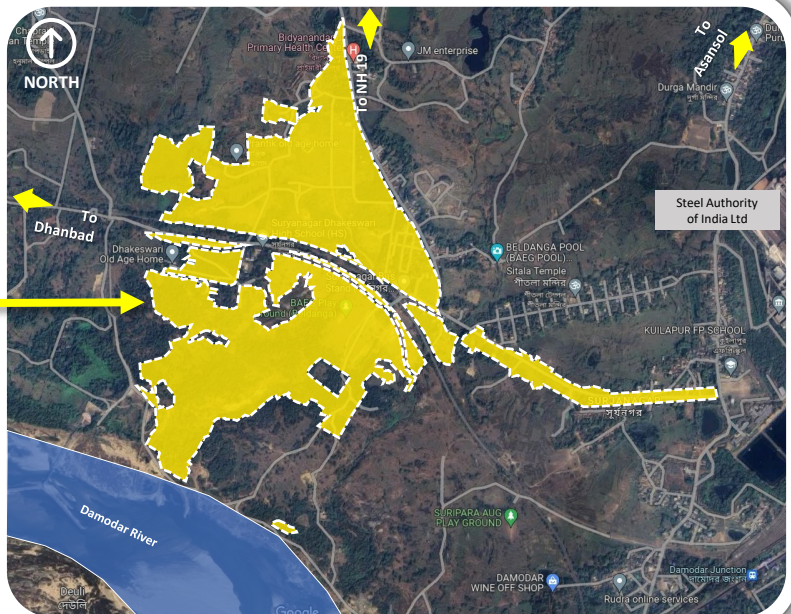
Key Map



NH



Project Location



Site Features

- Large land parcel on offer.
- Located 9 km from National Highway 19.
- Good connectivity via NH19 Corridor; Well connected to Asansol, Durgapur and to the rest of the county via NH19.
- Part of Asansol-Durgapur Development Area which is one of the most industrialised and urbanised in the State.

Details and application available at www.silpasathi.wb.gov.in & www.wbidc.com

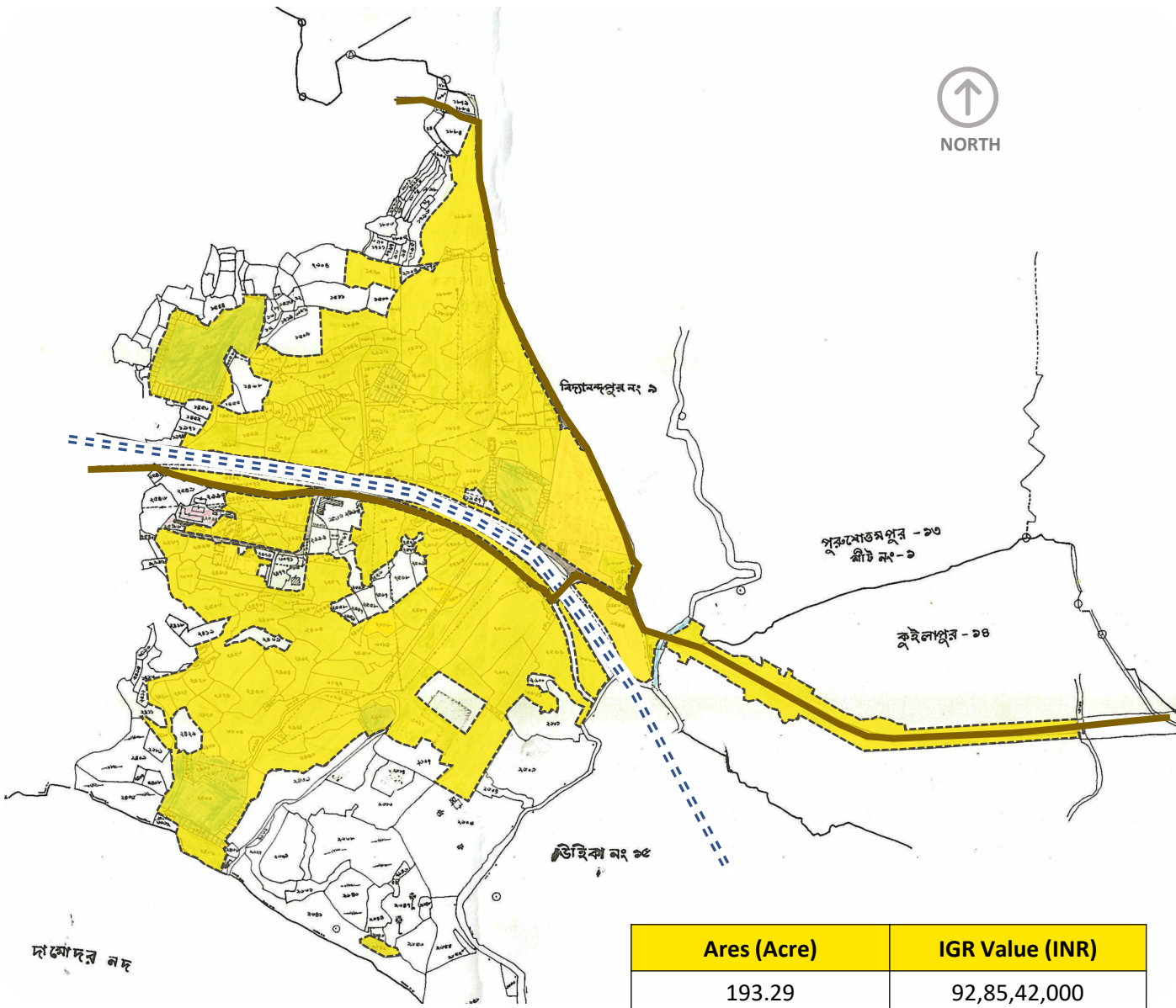
By Order
Chairman & Managing Director, WBIDC

WEST BENGAL INDUSTRIAL DEVELOPMENT CORPORATION LIMITED

'Protiti', 23 Abanindranath Thakur Sarani, Kolkata – 700 017



Allotment of Land for Development of Industry at Dhakeswari Cotton Mill Premise, Asansol



WEST BENGAL INDUSTRIAL DEVELOPMENT CORPORATION LIMITED
'Protiti', 23 Abanindranath Thakur Sarani, Kolkata – 700 017