



WEST BENGAL

Land of Prosperity and Growth

West Bengal At Glance



Capital
Kolkata

Population



91.3 Mn

GSDP

2.6x

From 2012-13 to 2022-23 (RE)



GSDP Growth

Rate

8.41%

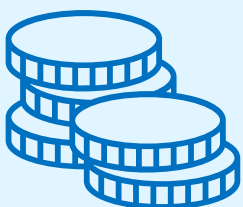
Constant Price 2022-23(1st AE)



Capital Expenditure

4x

From 2012-13 to 2022-23
(RE)



Area

88,752 km²



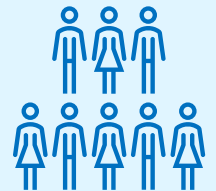
Literacy %

77.1%



Working Population

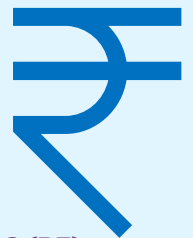
56%



Tax Revenue

9.25%

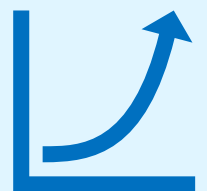
CAGR from 2012-13 to 2022-23 (RE)



SGST Revenue

24.46%

Cumulative growth upto Jan 2023



Infrastructural Strengths



Roads & Expressways

3rd largest road network

1,29,520 km rural road constructed/strengthened

Additional **12000 km road to be constructed** by Pathashree-Rastashree' - flagship project

4000 km of railway tracks and leading state in rail density

~2nd Largest Metro Line in Kolkata in India

1st under-water metro tunnel of the country to be set up



Rail



Airports

2 international airports

1st private greenfield airport of India operational at Andal

2 major ports at Kolkata & Haldia

~2 upcoming deep seaports at Tajpur & Kulpi



Maritime

Bengal offers excellent Strategic Location:

Easy access to key international trade routes - Australia, Bangladesh, China, Malaysia, New Zealand, Singapore and other coastal places & booming hubs of Asia - Singapore, Thailand and Malaysia

Gateway to Southeast Asia, Northeast India & International borders- Bangladesh, Nepal and Bhutan



Key Focus Sectors



Manufacturing & Industries



Energy



**Health, Health
Infrastructure & Health
Education**



Tourism



MSME



Education



**International Trade
& Logistics**



**Blue
Economy**



**Agriculture &
Allied**



**Transport
Infrastructure**



**Knowledge
Economy including
IT & ITeS**



**Creative Economy
& Film Industry**



**Inclusive
Economy**



Skills