



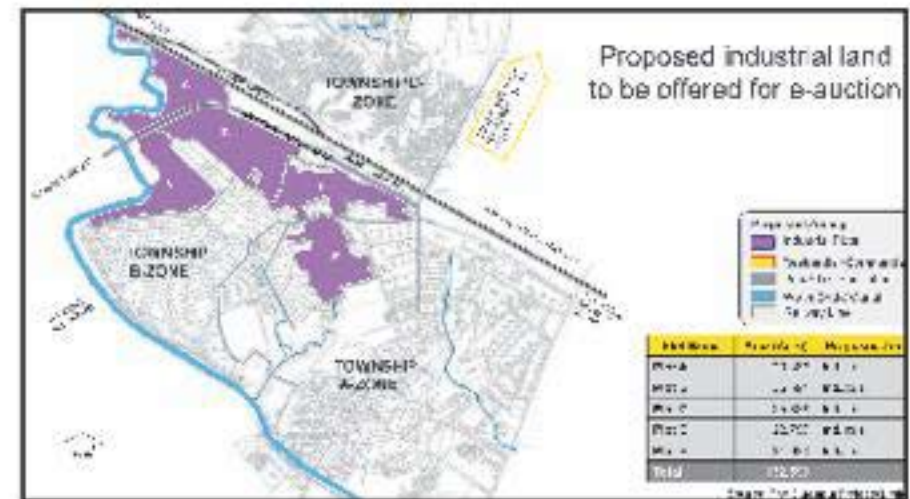
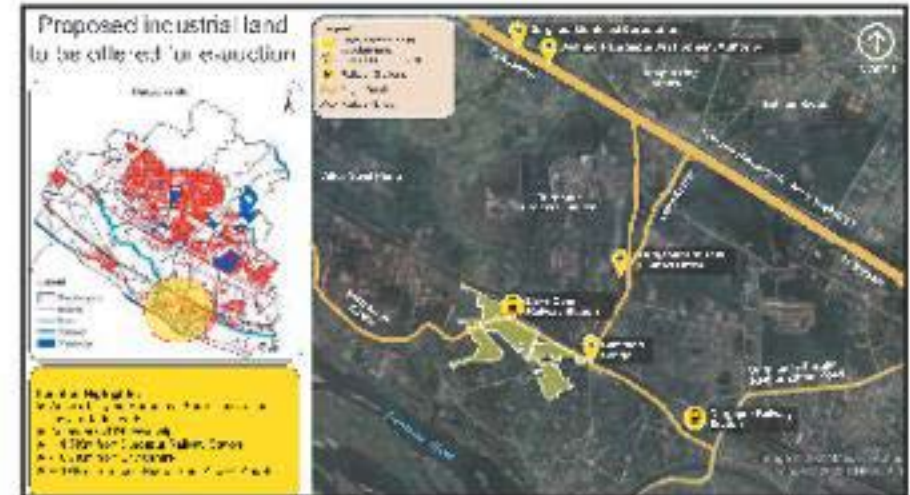
Allotment of Land for Development of Industry at Durgapur



West Bengal Industrial Development Corporation (WBIDC), is offering land on 'as is where is basis' for setting up of Industries at Durgapur, Paschim Bardhaman over approximately 132.599 acres of land near Durgapur.

- The project site is well connected by roads with Kolkata being around 175km away, nearest railway station is Durgapur
- Total land area is divided in 5 parcel of land
- The park is very close to the Durgapur industrial zone
- Base price of the land is Rs 1.654 crore/acre

Details are available at www.wbidc.com



By Order
Chairman & Managing Director, WBIDC

WEST BENGAL INDUSTRIAL DEVELOPMENT CORPORATION LIMITED

'PROTITI', 23, Abanindranath Thakur Sarani, Kolkata – 700 017